

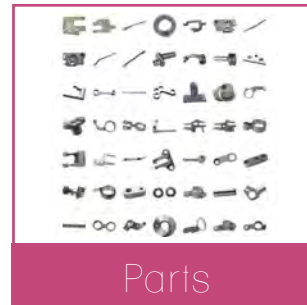
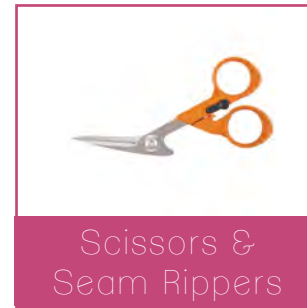
Discount

embroidery supply



[Home](#) > [Shop](#) > [Supplies](#)

- ▼ Brand
- Robison-Anton
 - Isacord
 - Madeira
 - Floriani
 - Sulky Poly
 - Serafil
 - Mettler
 - YLI
 - Superior
- ▶ Price
- ▶ Color
- ▶ Material



Information

- [About Us](#)
- [New Collection](#)
- [Best Sellers](#)
- [Manufacturers](#)
- [Privacy Policy](#)
- [Terms & Conditions](#)
- [Blog](#)

Customer Service

- [Search Terms](#)
- [Advanced Search](#)
- [Orders and Returns](#)
- [Contact Us](#)
- [RSS](#)
- [Help](#)
- [Store Locator](#)

STAY CONNECTED



SUBSCRIBE to OUR NEWS LETTER

[SUBSCRIBE](#)



[Home](#) > [Shop](#) > [Supplies](#) > [Thread](#) > [Robison-Anton](#)

Robison-Anton Poly Thread

Item # rpt18849



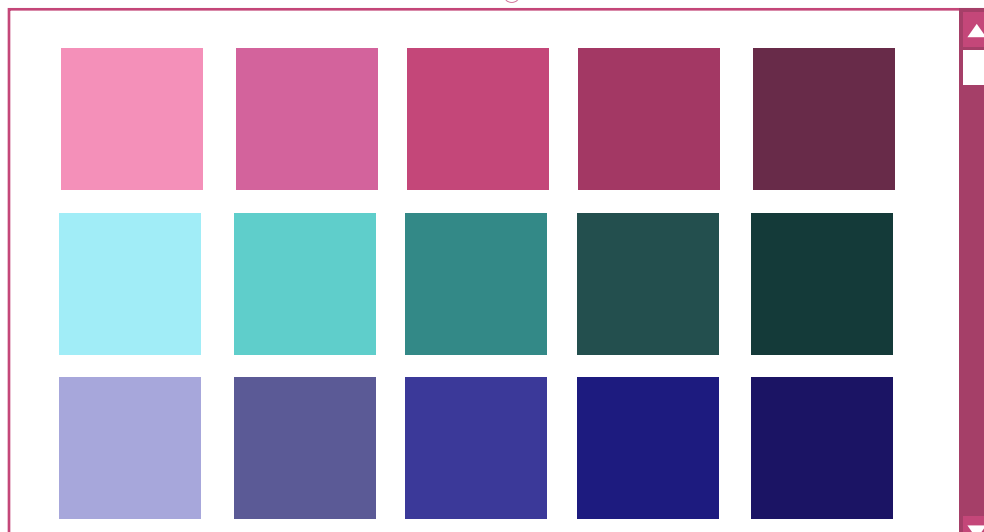
~~\$3.99~~ **\$2.99**

select color:

by swatch

by name

Click on a swatch to check availability and add to cart.



Information

[About Us](#)

[New Collection](#)

[Best Sellers](#)

[Manufacturers](#)

[Privacy Policy](#)

[Terms & Conditions](#)

[Blog](#)

Customer Service

[Search Terms](#)

[Advanced Search](#)

[Orders and Returns](#)

[Contact Us](#)

[RSS](#)

[Help](#)

[Store Locator](#)

STAY CONNECTED



SUBSCRIBE to OUR NEWS LETTER

SUBSCRIBE



You asked, we answered:

Q: What size needle do I need?

A: You should select the type of needle based on the textile construction (i.e. knit vs. woven), and the needle size is determined by the thickness of the thread and the weight of the fabric you will be using for your project.

There are two needle sizing systems: American and European. American needle sizes range from 8 to 19, and European sizes range from 60 to 120. The larger the number, the larger the blade of the needle. Often you will see both sizing numbers on the needle package, such as 60/8 and 70/10.

Q: What kind of thread should I use for machine quilting?

A: When piecing with 100% cotton fabric, it is important to use a 100% cotton thread. Choose a neutral color (many quilters use white, cream or gray for all of their quilting projects) or choose a thread to match the fabrics you'll be sewing. Good quality cotton threads produce less lint than lower quality cotton threads and are visibly "smoother" than the lower grades of cotton thread. High quality threads, which produce less lint, are also good for your sewing machine. An excellent thread choice for piecing is Aurifil Mako 50 weight cotton thread. This thread is silky smooth and fine, while at the same time, it's strong and durable.



Information

[About Us](#)[New Collection](#)[Best Sellers](#)[Manufacturers](#)[Privacy Policy](#)[Terms & Conditions](#)[Blog](#)

Customer Service

[Search Terms](#)[Advanced Search](#)[Orders and Returns](#)[Contact Us](#)[RSS](#)[Help](#)[Store Locator](#)

STAY CONNECTED



SUBSCRIBE to OUR NEWS LETTER

[SUBSCRIBE](#)